

NON-LOCAL MEANS FILTER FOR POLARIMETRIC SAR SPECKLE REDUCTION -EXPERIMENTS USING TERRASAR-X DATA

J. Hu ^a, R. Guo ^b, X. Zhu ^{a,b,*}, G. Baier ^b, Y. Wang ^a

^a Helmholtz Young Investigators Group “SiPEO”, Technische Universität München, Germany

^b Remote Sensing Technology Institute (IMF), German Aerospace Center (DLR), Oberpfaffenhofen, D-82234 Weßling, Germany, -
xiao.zhu@dlr.de

Commission VI, WG VI/4

KEY WORDS: Non-local means filter, Polarimetric synthetic aperture radar (PolSAR), TerraSAR-X, Similarity analysis, Weight kernel, Speckle reduction, Detail preservation, Polarimetric information preservation

ABSTRACT:

The speckle is omnipresent in synthetic aperture radar (SAR) images as an intrinsic characteristic. However, it is unwanted in certain applications. Therefore, intelligent filters for speckle reduction are of great importance. It has been demonstrated in several literatures that the non-local means filter can reduce noise while preserving details. This paper discusses non-local means filter for polarimetric SAR (PolSAR) speckle reduction. The impact of different similarity approaches, weight kernels, and parameters in the filter were analysed. A data-driven adaptive weight kernel was proposed. Combined with different similarity measures, it is compared with existing algorithms, using fully polarimetric TerraSAR-X data acquired during the commissioning phase. The proposed approach has overall the best performance in terms of speckle reduction, detail preservation, and polarimetric information preservation. This study suggests the high potential of using the developed non-local means filter for speckle reduction of PolSAR data acquired by the next generation SAR missions, e.g. TanDEM-L and TerraSAR-X NG.

1. INTRODUCTION

Polarimetric synthetic aperture radar (PolSAR) has been widely applied in Earth observation, including land classification, snow cover mapping, surface geophysical parameter estimation, and so on. However, in certain applications, the presence of speckle limits the usage of PolSAR data, making speckle reduction a prerequisite.

Speckle filtering, or most of the filtering problems, can be viewed as a weighted averaging in spatial domain. The samples been averaged can be drawn within a local neighbourhood to the target pixel or be drawn anywhere in the whole image. The latter was introduced as the non-local means filter in (Buades et al., 2005), which is demonstrated to have great speckle reduction as well as detail preservation power. This paper analyses the non-local means filter in PolSAR image, with special attention on a new weight kernel combining with different similarity measures. To bring some background knowledge, a briefly introduction of the state-of-the-art of speckle filters is as follows.

Local filter

Local filter selects samples within a local window. The most straightforward one is the Boxcar filter, which averages all the pixels in a sliding window.

Instead of averaging all the samples in the local window, one could also adaptively select them. One well-known local adaptive filter is the Lee filter introduced by (Lee, 1980), which takes into account the statistics of the local window. In (Lee, 1981), Lee introduced the improved Lee filter by changing the

square window into a rectangular or triangular window, whose exact shape is adaptive to the edge in the image. In this way, the orientation of structures is well preserved. (Vasile et al., 2006) applied homogenous region recognition using local statistics. After regions are recognized, they applied the strategy of the Lee filter for speckle reduction. (D'Hondt et al., 2013) utilised both spatial information and radiometric information (intensity in SAR and covariance matrix in PolSAR) to carry out weighted averaging in the local window. They not only consider the spatial relation of two pixels but also the information the pixels carry.

Non-local filter

(Buades et al., 2005) introduced a new technique called non-local means filter. This filter broke through the local limitation of conventional filters. Experiments and research have shown that the non-local means filter is capable of strong noise reduction while preserving details.

The key studies in the non-local means filter lies in the similarity measure of two pixels. (Chen et al., 2011) treats it as a detection problem by modelling the PolSAR covariance matrix of a pixel in homogenous area as a Wishart distribution. A criterion derived from the likelihoods of the covariance matrices to the model measures how similar two pixels are. The similarity measures are mapped to weights by a kernel. (Liu and Zhong, 2014) introduced an additional prior term in the likelihood. (Deledalle et al., 2014b) extended the algorithm to general multi-pass SAR data, with local adaptation of parameters, and post-processing for bias reduction.

* Corresponding author.

2. POLSAR DATA

2.1 PolSAR data format

With horizontal and vertical linear polarizations, the PolSAR data can be expressed by the scattering matrix.

$$\mathbf{S} = \begin{bmatrix} S_{HH} & S_{HV} \\ S_{VH} & S_{VV} \end{bmatrix} \quad (1)$$

H: Horizontal linear polarization
V: Vertical linear polarization

Under the reciprocal assumption, $S_{HV} = S_{VH}$, the scattering matrix can be transformed into a scattering vector, either the 3D Lexicographic vector $\mathbf{\Omega}$ or the 3D Pauli vector \mathbf{K} (Lee and Pottier, 2009).

$$\mathbf{\Omega} = \begin{bmatrix} S_{HH} \\ \sqrt{2}S_{HV} \\ S_{VV} \end{bmatrix} \quad \mathbf{K} = \frac{1}{\sqrt{2}} \begin{bmatrix} S_{HH} + S_{VV} \\ S_{HH} - S_{VV} \\ 2S_{HV} \end{bmatrix} \quad (2)$$

The covariance and coherence matrix can be defined from the Lexicographic and the Pauli vector, respectively as follows:

Covariance matrix:

$$\mathbf{C} = \langle \mathbf{\Omega} \mathbf{\Omega}^H \rangle \quad (3)$$

Coherence matrix:

$$\mathbf{T} = \langle \mathbf{K} \mathbf{K}^H \rangle \quad (4)$$

where H is the Hermitian transpose, and $\langle \cdot \rangle$ denotes the expectation.

The joint distribution of $\mathbf{\Omega}$ is usually modelled as a multivariate complex circular Gaussian distribution.

$$P_{\Omega}(\mathbf{\Omega}) = \frac{1}{\pi^3 |\mathbf{C}|} \exp(-\mathbf{\Omega}^H \mathbf{C}^{-1} \mathbf{\Omega}) \quad (5)$$

3. NON-LOCAL MEANS FILTER

3.1 Workflow of non-local means filter

The non-local means filter selects similar pixels in the whole image, whereas in practise only a large enough search window is used, in order to reduce the computational cost.

While searching for similar pixels, not only the two pixels are compared, but also their respective neighbourhood, called patches. Comparing patches instead of just single pixels better preserves the structures.

Through certain comparison, the similarity value can be calculated. It is mapped into weights through a kernel, which are used in the weighted average.

3.2 Similarity measures

(Deledalle et al., 2014a) categorised similarity measures into three classes: the detection approach, the geometric approach, and the information approach. One example from each category

and another similarity introduced by (Guo et al., 2015) are introduced in this section and analysed in the following.

Detection approach compares the likelihoods of the pixels covariance matrices based on a statistical model. (Chen et al., 2011) models the covariance matrices as a Wishart distribution and employs a generalized likelihood ratio test. The criterion (6) describes the similarity of two PolSAR pixels.

$$\Delta(\mathbf{C}_1, \mathbf{C}_2) = \log\left(\frac{|\mathbf{C}_1|^L |\mathbf{C}_2|^L}{|0.5(\mathbf{C}_1 + \mathbf{C}_2)|^{2L}}\right) \quad (6)$$

where \mathbf{C}_i = PolSAR covariance matrix
i = indicate different pixel
L = number of looks
|·| = determinate of matrix
 Δ = similarity value of two pixels

Geometric approach does not assume any specific model, but rather utilises the geometric distance of two PolSAR covariance matrices to describe their similarity. One example (D'Hondt et al., 2013) of the geometric approach adopts an affine invariant metric (7).

$$\Delta(\mathbf{C}_1, \mathbf{C}_2) = \left\| \log \left[\mathbf{C}_1^{-1/2} \mathbf{C}_2 \mathbf{C}_1^{1/2} \right] \right\|_F \quad (7)$$

where $\|\cdot\|_F$ = Frobenius norm
log = matrix logarithm

Information approach originates from information theory. One example (D'Hondt et al., 2013) of the information approach utilises the Kullback-Leibler divergence, which measures the discrepancy of two probability distributions. Based on the assumption that the PolSAR data following multivariate complex circular normal distribution, they constructed a symmetric measurement of Kullback-Leibler divergence as follows:

$$\Delta(\mathbf{C}_1, \mathbf{C}_2) = \frac{1}{2} \text{tr}(\mathbf{C}_1^{-1} \mathbf{C}_2 + \mathbf{C}_2^{-1} \mathbf{C}_1) - d \quad (8)$$

where tr = trace of matrix
d = dimension of PolSAR covariance matrix

Lastly, the **trace approach** is introduced by (Guo et al., 2015). It measures the difference of PolSAR covariance matrices using the criterion (9)

$$\Delta(\mathbf{C}_1, \mathbf{C}_2) = \log\left(\sqrt{\frac{\text{tr}(\mathbf{C}_1 \mathbf{C}_2)^2}{\text{tr}(\mathbf{C}_1 \mathbf{C}_1) \text{tr}(\mathbf{C}_2 \mathbf{C}_2)}}\right) \quad (9)$$

All the four similarity measures are defined in $[-\infty, 0]$, with 0 implies the highest similarity, i.e. the analysed pixel is identical to the target pixel.

4. ANALYSIS OF NON-LOCAL MEANS FILTER FOR POLSAR

4.1 Data

All experiments in this work exploit fully polarimetric TerraSAR-X data acquired in the commissioning phase. The experimental data are shown in Figure 1 in the Pauli basis.

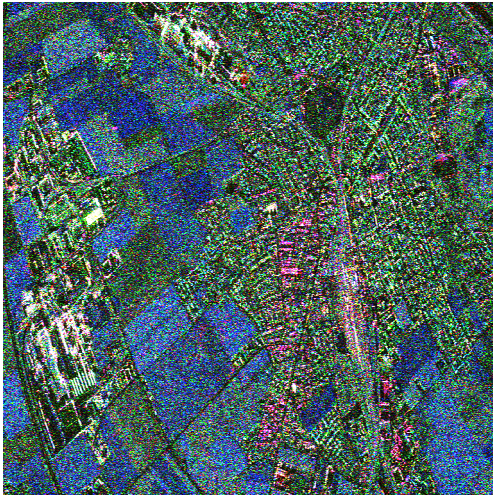


Figure 1. TerraSAR-X data of Plattling, Germany

4.2 Analyses of similarity approaches

Similarity measures greatly influence the performance of the non-local means filter. In this section, different similarity measures are analysed in terms of homogeneous pixel recognition and detail differentiation.

For the experiment, two test areas are selected from the data, one homogeneous, and the other with regular pattern. Only the latter is shown in this paper (Figure 2). One pixel from each test area is chosen as the target pixel. The target similarity images (TSI) of the selected target pixels are computed, which show the similarity values between the target pixel and every other pixel in the test area.

Test area one

The expected TSI is a constant zero for a homogeneous area. Therefore the mean and standard deviation of the similarity values in the TSIs are the matrices of the performance of different similarity measures. The closer the mean value to zero and the smaller the standard deviation, the better the similarity measures perform. The similarity values of all approaches are rescaled for the convenience of comparison. The mean values and standard deviations are shown in Table 1. According to Table 1, the information approach is the most suitable for recognizing homogeneous pixels among these four similarity approaches.

Approach	Mean	Standard deviation
Detection	-344.0727	51.0068
Geometry	-244.8148	68.9323
Information	-218.2565	57.1280
Trace	-256.2218	61.6282

Table 1. Mean and standard deviation of similarity values calculated from homogeneous area

Test area two

The test area is shown in Figure 2. The pixel marked by the red dot in Figure 2 is the selected target pixel and the TSIs are shown in Figure 3. It can be observed that the detection approach, the geometric approach, and the information approach are capable of recognizing the selected pattern.

Among them the geometric approach can even detect the variance in the selected area and shows obvious contrast.

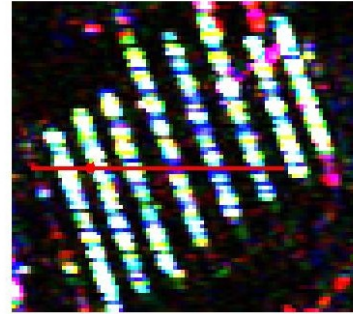


Figure 2. Pattern selected from TerraSAR-X data

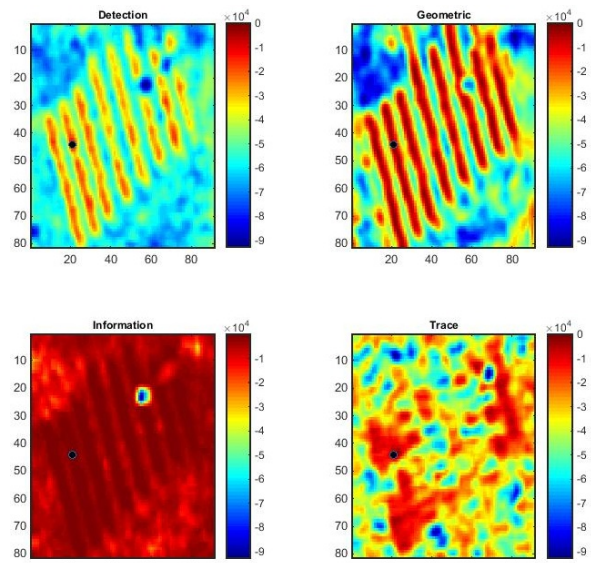


Figure 3. Target similarity images of selected pattern (the target pixel is marked by the black dot in the target similarity images)

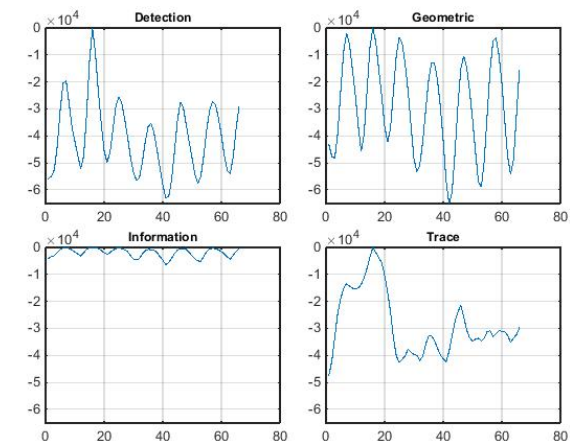


Figure 4. Selected pattern and similarity values along the cross section line

For a detailed comparison, Figure 4 plots the similarity values of a slice through the pattern. The slice is marked as the red line in Figure 2. The target point is the intersection of the red line

and the second stripe in the pattern. It can be clearly observed from Figure 2 that the first three intersection points are very similar while the fourth and fifth ones are less similar. This fact is only precisely detected by the geometric approach. The similarity values along the red line also verify that the geometric approach is capable of detecting the contrast.

According to these two analyses, the geometric approach has the best performance on differentiation ability among these evaluated similarity approaches.

4.3 Analyses of weighting kernel

Exponential kernel

The most common exponential weighting kernel used in (Buades et al., 2005):

$$w = e^{-\frac{\Delta}{h}} \quad (10)$$

where w = weight value
 Δ = similarity value
 h = filtering parameter

Since the kernel function is determined, the filtering parameter is the most important factor, which influences the filtered results. Therefore, Figure 5 shows the impact of different filtering parameters on the filtered results. Choices of filtering parameter influence the speckle reduction and detail preservation. These two aspects always form a trade-off. It is obvious that selecting appropriate filtering parameter is crucial for the weight kernel.

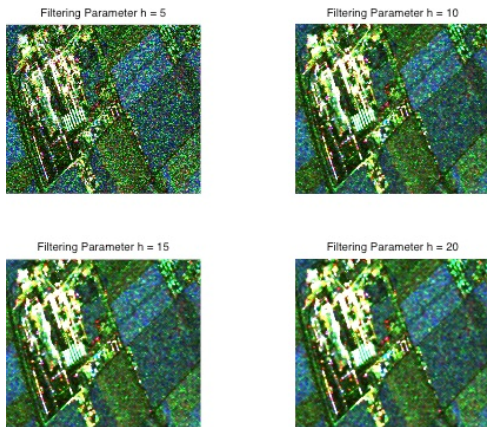


Figure 5. Filtered results using different filtering parameters

Piecewise kernel

In addition to the exponential kernel as (10), there also exists the piecewise kernel (11), where the original filtering parameter acts as a threshold.

$$w = \begin{cases} 1 & \Delta \geq h \\ 0 & \Delta < h \end{cases} \quad (11)$$

while the exponential kernel assigns small weight values even to dissimilar pixels, the piecewise kernel excludes these pixels from the filtering process. Hence, the piecewise kernel avoids the risk that, for isolated and very bright scatterers, which are quite common in SAR, even though these pixels are assigned small weights, they will have a considerable contribution when

computing the weighted mean. Moreover, if the search window is large and few similar pixels of the target pixel are found, the piecewise kernel limits the filtering only to similar pixels and gives less biased results.

The selection of the filtering parameter is vital for both types of kernel. The best selection strategy is capable of differentiating similar pixel pairs and dissimilar pairs regardless of the employed similarity approach and patch size.

Proposed kernel

Based on the piecewise kernel, we propose a new kernel which adaptively determines the threshold. A user-selected homogeneous area and heterogeneous area are sampled and for both areas all similarity values are calculated. The two probability density functions of the similarity values are then used for determining the threshold.

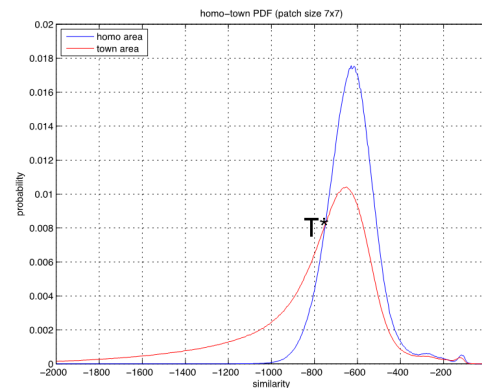


Figure 6. Probability density functions of similarity values calculated from homogeneous and heterogeneous areas

Figure 6 shows the PDFs calculated from the samples of TerraSAR-X data to exemplify the selection of filtering parameter. The red curve and blue curve in Figure 6 are the PDFs of similarity values calculated from the heterogeneous area and the homogeneous area, respectively. These two curves have an intersection point T. On the left side of point T, the corresponding similarity values are very small, and are most likely calculated from dissimilar pixel pairs. Conversely on the right side of point T, the PDF of similarity values from homogeneous area has a higher probability.

This paper treats the similarity value corresponding to the intersection point T as a boundary to separate similarity values representing similar pixel pairs and dissimilar pixel pairs. This value is selected as the filtering parameter, similarity threshold, for the piecewise kernel.

4.4 Experiments

In this section, the proposed kernel is examined using TerraSAR-X data in conjunction with the detection approach, the geometric approach, and the information approach. These three filtered results are compared to the NLSAR (Deledalle et al., 2014b), DSM (Liu and Zhong, 2014), Pretest (Chen et al., 2011), Refined Lee (Lee, 1981), and IDAN (Vasile et al., 2006), where the first three are non-local means filters, and the last two are conventional local filters. The results of Refined Lee and IDAN are produced by PolSARpro (European Space Agency, 2011). The results of NLSAR, DSM, and Pretest are

produced without any post-processing and parameter adaptive strategy. Figure 7 shows the filtered results of all these methods.

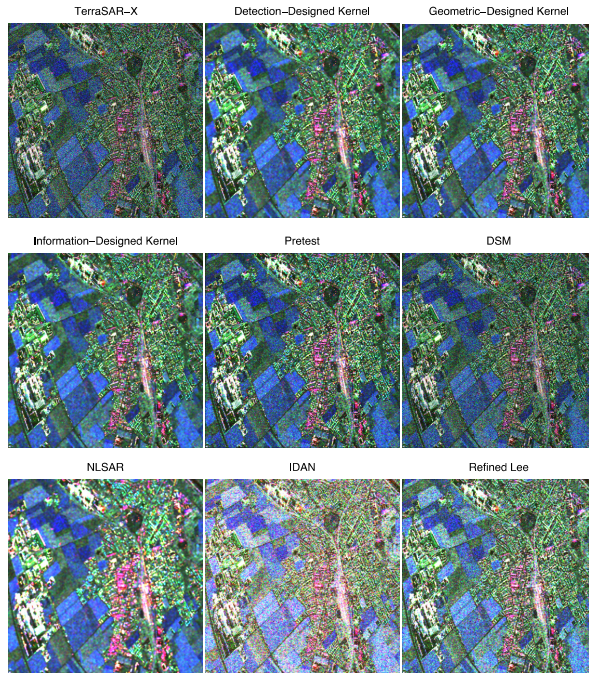


Figure 7. Original and filtered TerraSAR-X data

4.5 Evaluation

The results are evaluated based on three aspects: speckle reduction, detail preservation, and polarimetric information preservation.

Speckle reduction

The equivalent number of looks (ENL) is used as the index to evaluate these methods' performance on speckle reduction (Lee & Pottier, 2009). It is calculated with respect to three selected homogenous areas from experimental TerraSAR-X data for all three polarimetric channels. This index is shown Table 2.

	Channel	Homo1	Homo2	Homo3
TerraSAR-X	HH	0.9381	0.9457	0.9844
	HV	0.9731	1.0202	1.0400
	VV	0.9707	0.9401	0.9978
Designed kernel & Detection	HH	18.1574	17.2730	23.3546
	HV	20.4746	27.1020	26.7908
	VV	19.2685	17.8698	24.0250
Designed kernel & Geometry	HH	15.3539	14.6479	19.2604
	HV	17.0327	22.5553	24.0048
	VV	15.7995	14.5693	19.6927
Designed kernel & Information	HH	19.0030	18.0337	25.2185
	HV	21.7867	28.8922	29.2935
	VV	20.0155	18.4786	26.0310
Pretest	HH	5.6620	5.4475	5.8125
	HV	6.0696	6.8435	7.2912
	VV	5.8481	5.4160	5.8701
DSM	HH	1.3358	1.3379	1.3883
	HV	1.3840	1.4477	1.5495
	VV	1.3754	1.3426	1.4554

NLSAR	HH	23.7480	22.8210	33.0070
	HV	27.2450	38.4246	38.4299
	VV	24.8334	22.8480	36.0336
Refined Lee	HH	6.7274	6.3111	7.3239
	HV	7.0685	7.6729	7.2824
	VV	6.6802	6.4477	6.5450
IDAN	HH	4.0362	3.9362	4.5768
	HV	4.5391	4.9938	4.9474
	VV	4.0647	4.0313	4.7773

Table 2. ENL of homogeneous areas selected from filtered TerraSAR-X data

Higher ENL implies better speckle reduction. The best two filters: NLSAR and the newly designed kernel combined with the information approach, are marked in bold in Table 2.

Detail preservation

The measure of detail preservation is according to the edge preservation degree of ratio of average (EPD-ROA) (Feng et al., 2011):

$$EPD-ROA = \frac{\sum_{i=1}^m |I_{D1}(i)/I_{D2}(i)|}{\sum_{i=1}^m |I_{O1}(i)/I_{O2}(i)|} \quad (12)$$

where m =number of pixels in selected area
 i =ith pixel in selected area
 I_{D1}, I_{D2} =adjacent pixels' values of filtered data
 I_{O1}, I_{O2} =adjacent pixels' values of original data

For three areas which include edge structures are selected from experimental TerraSAR-X data, filtered by all these algorithms, EPD-ROA is calculated. Every polarimetric channel of these filtered data are evaluated using EPD-ROA. The values of the index are shown in Table 3.

While using EPD-ROA evaluates detail preservation, if the value of the index is closer to one, it means that the corresponding algorithm performs better on detail preservation. The best three filters regarding detail preservation, the designed kernel with the geometric approach, the designed kernel with the information approach, and DSM, are marked as bold in Table 3. One interesting coincidence is that DSM and the designed kernel with the information approach perform exactly the same on detail preservation, although they have total different similarity approach and weight kernel.

EPD-ROA	Channel	Edge1	Edge2	Edge3
Designed kernel & Detection	HH	0.2845	0.3267	0.1264
	HV	0.2640	0.3283	0.1230
	VV	0.2643	0.2981	0.1124
Designed kernel & Geometry	HH	0.3324	0.3319	0.1652
	HV	0.2920	0.3182	0.1557
	VV	0.2840	0.2864	0.1305
Designed kernel & Information	HH	0.3021	0.3324	0.1211
	HV	0.2744	0.3291	0.1270
	VV	0.2753	0.2930	0.1063
Pretest	HH	0.0518	0.0777	0.0469
	HV	0.0659	0.0742	0.0514
	VV	0.0475	0.0789	0.0544
DSM	HH	0.3021	0.3324	0.1211
	HV	0.2744	0.3291	0.1270
	VV	0.2753	0.2930	0.1063
NLSAR	HH	0.0022	0.0012	0.0055

	HV	0.0018	0.0014	0.0054
	VV	0.0019	0.0012	0.0054
Refined Lee	HH	0.2966	0.2848	0.1617
	HV	0.3297	0.2738	0.2522
	VV	0.3282	0.2969	0.2533
IDAN	HH	0.1412	0.1281	0.1994
	HV	0.1108	0.1169	0.2379
	VV	0.1004	0.1009	0.1968

Table 3. EPD-ROA of filtered data

Polarimetric information preservation

The decomposed parameters, entropy and alpha, and the unsupervised classification using entropy-alpha are utilised to evaluate the filters' performance on polarimetric information preservation.

The entropy and alpha are derived from the eigenvalues decomposed from PolSAR covariance matrix. The entropy carries the information of the number of targets and the alpha carries the information of the scattering mechanism.

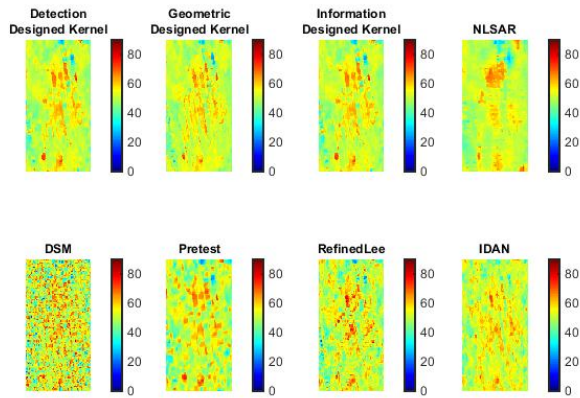


Figure 8. Decomposed alpha of the some pattern in filtered data

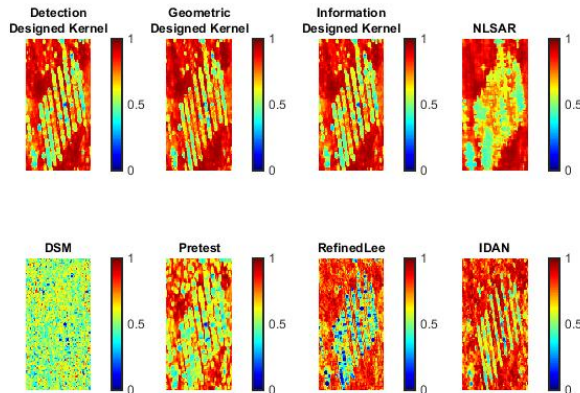


Figure 9. Decomposed entropy of the some pattern in filtered data

Figure 8 and Figure 9 shows the alpha and the entropy of the pattern in Figure 2 respectively. By visual evaluation of the pattern preservation of alpha and entropy, the designed kernel with geometric approach outperforms the other filters, because its result shows the best preservation of the pattern structure.

Furthermore, the entropy-alpha unsupervised classification (Cloude & Pottier, 1997) is also used to evaluate the preservation of polarimetric information. The unsupervised classification separates the entropy-alpha plane into nine regions (Figure 10), with each region associates to a class (Z1:Branch/Crown structure, Z2:Cloud of anisotropic needles, Z3:No feasible region, Z4:Forestry double bounce, Z5:Vegetation, Z6:Surface roughness propagation effect, Z7:Dihedral scatterer, Z8:Dipole, Z9:Bragg surface).

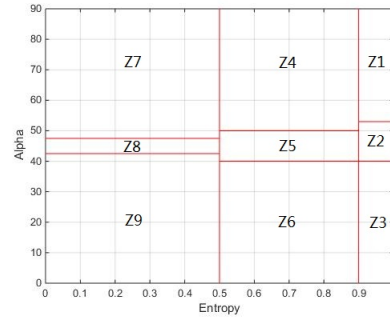


Figure 10. Entropy-alpha plane and categories of the entropy-alpha unsupervised classification (Cloude & Pottier, 1997)

In the filtered TerraSAR-X data, a vegetation area and a double bounce area are selected according to the optical image of the same area, which belong to class Z5 and Z7 respectively. The entropy-alpha of each pixel in the two areas filtered by the eight filters are mapped into the entropy-alpha plane as depicted in Figure 11, which is then used to evaluate their performance concerning polarimetric information preservation.

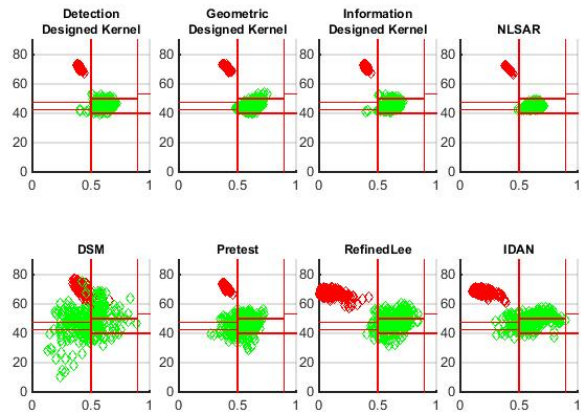


Figure 11. Entropy-alpha unsupervised classification test on vegetation scatterers and double bounce scatterers

According to the unsupervised classification, the designed kernel with the three similarity measures and NLSAR produce correct and compact classification results that means better preservation of polarimetric information.

To sum up, firstly, Pretest, NLSAR, and the designed kernel with detection approach utilise the same similarity approach. Pretest performs worse compared to the other two filters on all three aspects. NLSAR slightly outperforms the designed kernel with detection approach on speckle reduction, but it is not comparable to the designed kernel with detection approach on

detail preservation. The two filters have barely notable differences on the evaluation of the entropy-alpha unsupervised classification. However, the designed kernel with the detection approach has a much better performance concerning pattern preservation of the polarimetric information. So, the designed kernel outperforms the kernels used in the methods of Pretest and NLSAR.

Secondly, according to the three evaluated aspects, the designed kernel with the geometric approach and the information approach are capable of strong speckle reduction while preserving details and polarimetric information.

At last, the designed kernel enjoys some advantages originating from its definition. The kernel has the advantages of the piecewise kernel as discussed in section 3.4. It is also data adaptive because its filtering parameter is automatically determined from data samples.

5. CONCLUSION AND OUTLOOK

In this paper, the non-local means filter for speckle reduction of PolSAR data is analysed and a new weighting kernel is proposed.

The similarity approaches, including the detection approach, the geometric approach, the information approach and the trace approach, are analysed. In summary, the information approach and the geometric approach are comparable and outperform the detection approach. Among these two, the geometric approach gives overall better performance.

The designed kernel is adaptive to the data. Experiments using TerraSAR-X data show that it is capable of strong speckle reduction while preserving detail and the polarimetric information.

The PDF used in this work is calculated from samples of the real data, which have to be manually selected. In the future, a fully automatic sampling scheme should be developed.

ACKNOWLEDGMENT

This work is supported by the Helmholtz Association under the framework of the Young Investigators Group “SiPEO” (VH-NG-1018, www.sipeo.bgu.tum.de). TerraSAR-X data were obtained through TerraSAR-X science project LAN 2067 (Principal Investigator: Xiaoxiang Zhu).

REFERENCES

- Buades, A., Coll, B., and Morel, J.-M. 2005. A non-local algorithm for image denoising. In *Computer Vision and Pattern Recognition, 2005. CVPR 2005.* IEEE Computer Society Conference on, volume 2, pp. 60–65.
- Chen, J., Chen, Y., An, W., Cui, Y., and Yang, J. 2011. Nonlocal filtering for polarimetric sar data: A pretest approach. *Geoscience and Remote Sensing, IEEE Transactions on*, 49(5): pp.1744–1754.
- Cloude, S. R. and Pottier, E. 1997. An entropy based classification scheme for land applications of polarimetric sar. *Geoscience and Remote Sensing, IEEE Transactions on*, 35(1): pp. 68–78.

Deledalle, C.-A., Denis, L., Poggi, G., Tupin, F., Verdoliva, L., et al. 2014a. Exploiting patch similarity for sar image processing: the nonlocal paradigm. *IEEE Signal Processing Magazine* 31 (4): pp. 69-78.

Deledalle, C.-A., Denis, L., Tupin, F., Reigber, A., Jäger, M., et al. 2014b. Nl-sar: a unified non-local framework for resolution-preserving (pol)(in) sar denoising. *Geoscience and Remote Sensing, IEEE Transactions on*, 53 (4): pp. 2021 – 2038.

D’Hondt, O., Guillaso, S., and Hellwich, O. 2013. Iterative bilateral filtering of polarimetric sar data. *Selected Topics in Applied Earth Observations and Remote Sensing, IEEE Journal of*, 6(3): pp. 1628–1639.

European Space Agency, 2011. PolSARpro software Vision 4.2.0, <http://earth.eo.esa.int/polsarpro/> (accessed 21 Aug. 2014).

Feng, H., Hou, B., and Gong, M. 2011. Sar image despeckling based on local homogeneous-region segmentation by using pixel-relativity measurement. *Geoscience and Remote Sensing, IEEE Transactions on*, 49(7): pp. 2724–2737.

Guo, R. et al. 2015. *Non-local SAR filtering of TerraSAR-X polarimetric data.* Unpublished Article

Lee, J.-S. 1980. Digital image enhancement and noise filtering by use of local statistics. *Pattern Analysis and Machine Intelligence, IEEE Transactions on*, 2 (2): pp. 165–168.

Lee, J.-S. 1981. Refined filtering of image noise using local statistics. *Computer graphics and image processing*, 15(4): pp. 380–389.

Lee, J.-S. and Pottier, E. 2009. *Polarimetric radar imaging: from basics to applications.* CRC press.

Liu, G. and Zhong, H. 2014. Nonlocal means filter for polarimetric sar data despeckling based on discriminative similarity measure, *IEEE Geoscience and Remote Sensing Letters* 11 (2): pp. 514-518.

Vasile, G., Trouvée, E., Lee, J.-S., and Buzuloiu, V. 2006. Intensity-driven adaptive-neighborhood technique for polarimetric and interferometric sar parameters estimation. *Geoscience and Remote Sensing, IEEE Transactions on*, 44(6): pp. 1609–1621.